



ABN: 54 647 134 950

PRECAST CONCRETE AUST

[www.pcaus.com.au](http://www.pcaus.com.au)

[info@pcaus.com.au](mailto:info@pcaus.com.au)

1300 855 402

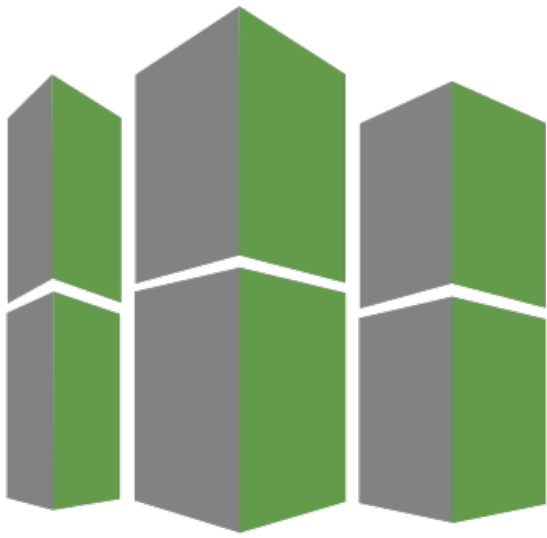
# BLOCK CATALOGUE & REFERENCE GUIDE

july 2021



---

sustainable precast concrete.



PRECAST  
CONCRETE  
AUSTRALIA



[info@pcaus.com.au](mailto:info@pcaus.com.au)



1300 855 402



[www.pcaus.com.au](http://www.pcaus.com.au)



18 Sandmere Road  
Pinkenba, Queensland

Contact	i
About Us	1
Capabilities	2
Custom Precast Solutions	3
Structures & Layouts	4
Reference Guide	5
Interlocking Blocks	6
Flat Top Blocks	9
Tie Down Blocks	12
Special Purpose Blocks	16
Grout Tubes	16
Drainage Conduits	17
Painting & Stencilling	18
Communications & Power	19
Precast Retaining Wall	20
Wide Based Blocks	27
Miscellaneous Blocks	29

## about us

Precast Concrete Aust (PCA) is a privately owned Queensland company that manufactures sustainable precast concrete products from mostly recycled materials. We offer a comprehensive catalogue of engineered precast concrete products that can be augmented with a variety of accessories and attachments. Our products have found use across the civil, mining, agricultural and materials storage industries.

Our products are available in a range of standard sizes and configurations of interlocking, flat-top and anchoring blocks. We also provide tailor-made custom precast products for clients requiring a unique solution to a unique problem. All of our customer service, design and manufacturing is done in-house at our manufacturing facility located in Pinkenba which has the capacity to produce greater than 500 tonnes of precast concrete per month.

We focus on producing sustainable concrete products by incorporating sustainable business practices at every step of the concrete lifecycle. We offer a whole of life product stewardship program to help clients recycle their concrete products to prevent unwanted blocks from ending up in landfill.

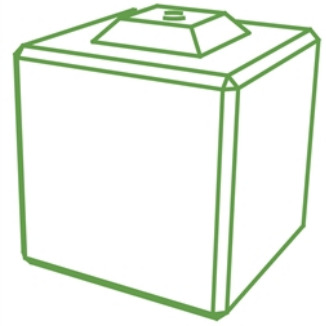


**PLEASE NOTE:** All drawings in this document have been prepared by Precast Concrete Aust Pty Ltd. These drawings are intended for conceptual purposes only. Anyone making use of these drawings do so at their own risk and assumes all liability for such use. Final design for construction purposes must be completed by a Registered Professional Engineer who is familiar with the product and who has taken into account site specific conditions.



## CONCRETE BLOCKS

Our standard blocks come in interlocking, flat-top or tie-down variants. They can be outfitted with a large variety of accessories including additional lifting points, tie down points, threaded ferrules, forklift pockets or reinforcing mesh. These blocks are available in 500kg to 1500kg sizes. We have made blocks as small as 40kg and are currently developing a block that weighs 23, 000 kilos. All our concrete is rated to at least 20 MPa in compressive strength and made from 85% recycled materials.



## CUSTOM PRECAST

We provide bespoke custom precast solutions for clients and customers who are unable to find products to suit their needs. Our design team will provide a concept sketch and can even provide a scale model to help the client visualise the end product. We will then create custom moulds and proceed to casting the product based on the specifications set out by the client.

## SUSTAINABLE CONCRETE

Our mission is to produce concrete that is more sustainable. We do this by implementing significant changes to how concrete is made at every stage of manufacturing. Our raw materials are locally sourced from recycled and reclaimed construction and demolition waste from worksites across South East Queensland. We utilise manufacturing methods which minimise wastage of raw materials, energy and water as much as possible.



## WHOLE OF LIFE PRODUCT STEWARDSHIP



We have implemented a product lifecycle program to try to keep our blocks out of landfill. If a concrete product no longer fulfils a need for our clients and customers we can take the blocks back at the end of their life. If we are unable to repurpose blocks then we recycle them back into raw materials and use them to make new blocks.

## custom precast solutions

Unique problems call for unique solutions.

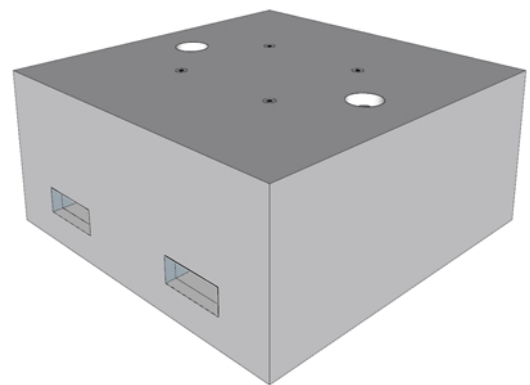
We are proud to offer custom manufacturing of precast concrete products to help you solve your unique problems when none of our standard products match your requirements.

Customised features that we've helped clients with include:

- Custom Shapes and Dimensions
- Attachments and accessories (including lifting points, tie down points, reinforcing mesh)
- External Fittings (such as ferrules, ragbolts, grout tubing, bolts)
- Painting
- Stenciling

We leverage technology to help our clients come up with their perfect prototype by using computer assisted drawing (CAD) to go from conceptual sketches to the final blueprints. We have an in-house fused deposition modelling (FDM) 3D printer to make scale model prototypes to help customers visualise their final product and also have the capabilities to produce quality 3D renders of the finished product in their final environment.

Get in touch with our team and we can walk you through the process. We will work out what works best for your needs, go through pricing and manufacturing and produce a concept sketch for you to see what your product will look like.



## structures & layouts

If you have a grander plan for your blocks we can help you with arrangement and layout advice to optimise the space you have whilst designing a structure that best suits your needs.

Our blocks are commonly used to make:

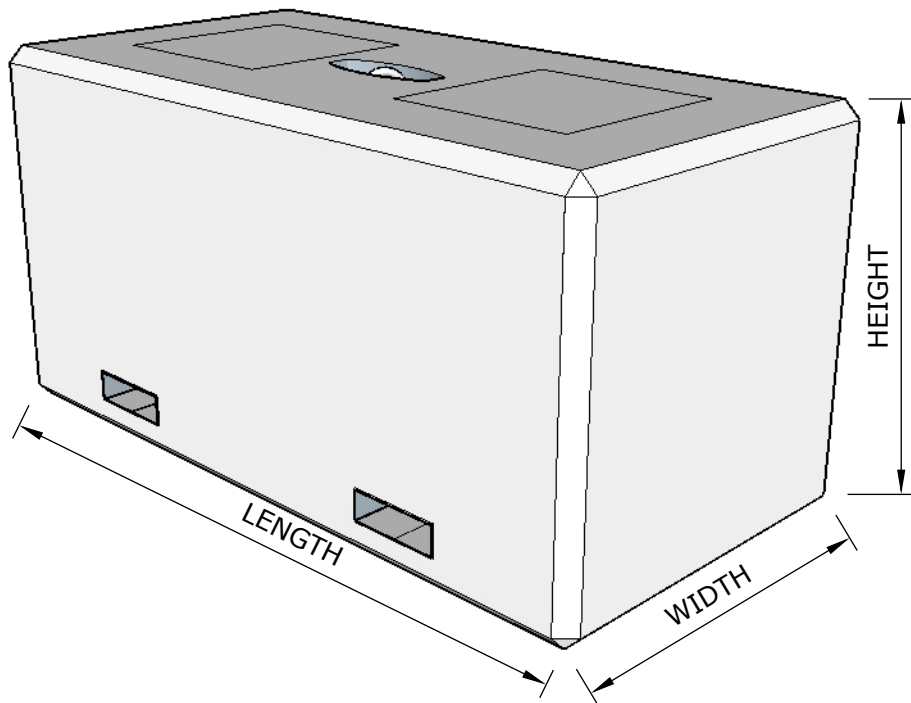
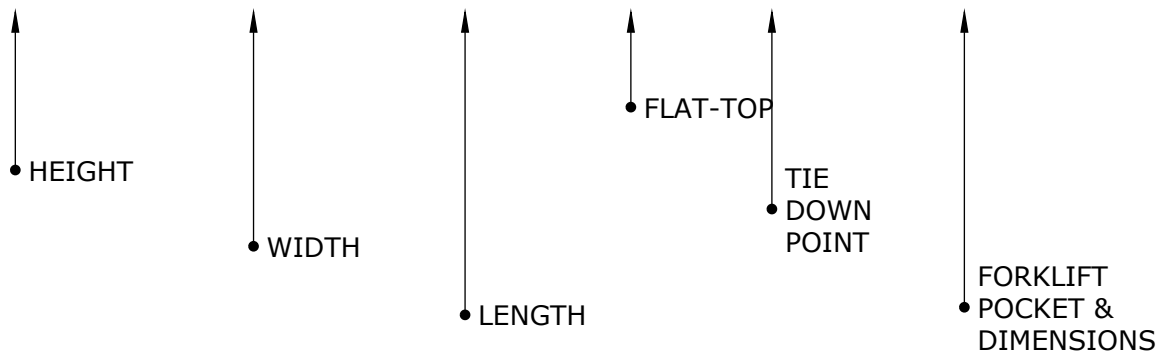
- Retaining Walls
- Materials Bunkers
- Supports for igloo/dome structures
- Walls

Contact us for advice on optimal arrangements to provide maximum stability whilst remaining cost-effective and sustainable.

\*Please note that structures exceeding 1m in most city council areas may require council approval and engineering assessment. Please check your local regulations before proceeding.

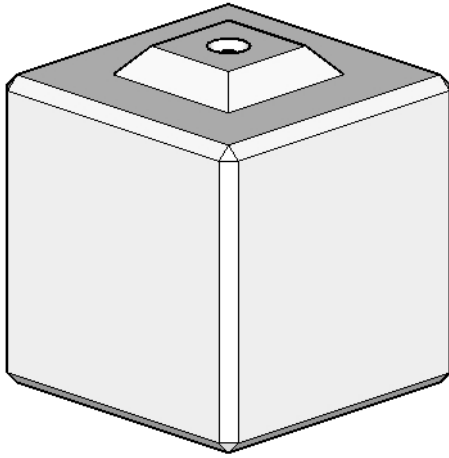


# CB.0600.0600.1200.FT.TDP.FL145





## 600H X 600W X 600L (500kg)



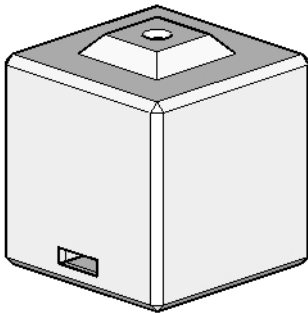
CB.0600.0600.0600

**Core Features:**

- 20MPA Concrete
- 85% locally sourced raw materials
- 1 of 2.5T engineered lifting point embedded within the interlocking nodule on the top surface
- Final product is 100% recyclable
- Designed and manufactured in Queensland

---

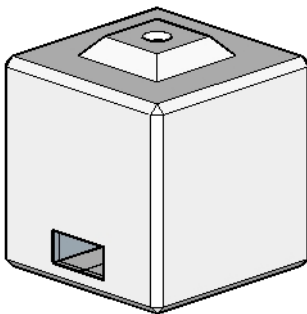
## VARIANTS



CB.0600.0600.0600.FL145

**Additional Features:**

- 1 of 145x45mm forklift pocket

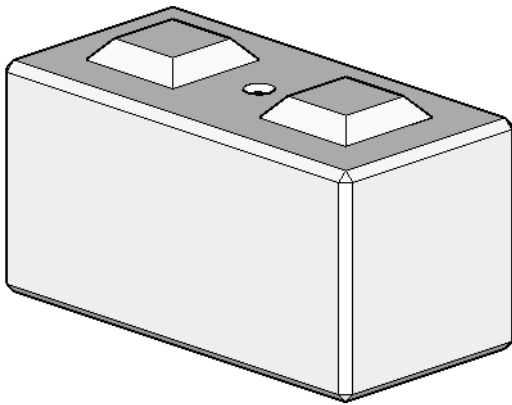


CB.0600.0600.0600.FL190

**Additional Features:**

- 1 of 190x90mm forklift pocket

## 600H X 600W X 1200L (1000kg)



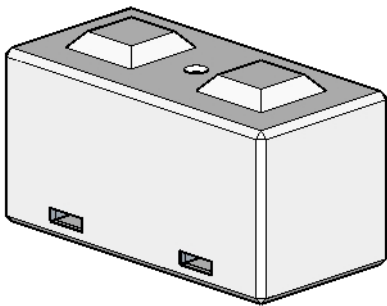
CB.0600.0600.1200

**Core Features:**

- 20MPA Concrete
- 85% locally sourced raw materials
- 2 of 2.5T engineered lifting point embedded within the interlocking nodule on the top surface
- Final product is 100% recyclable
- Designed and manufactured in Queensland

---

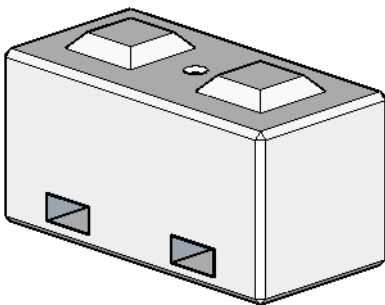
## VARIANTS



CB.0600.0600.1200.FL145

**Additional Features:**

- 2 of 145x45mm forklift pocket



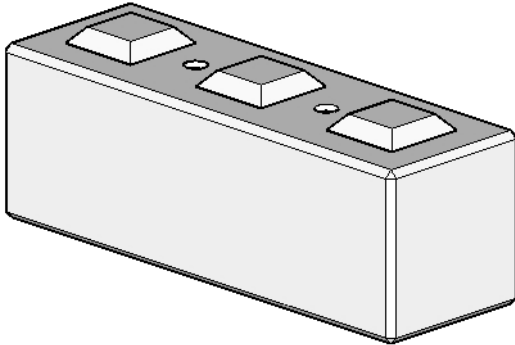
CB.0600.0600.1200.FL190

**Additional Features:**

- 2 of 190x90mm forklift pocket

## 600H X 600W X 1800L (1500kg)

CB.0600.0600.1800



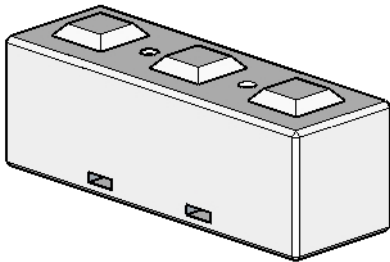
**Core Features:**

- 20MPA Concrete
- 85% locally sourced raw materials
- 2 of 2.5T engineered lifting point embedded within the interlocking nodule on the top surface
- Final product is 100% recyclable
- Designed and manufactured in Queensland

---

## VARIANTS

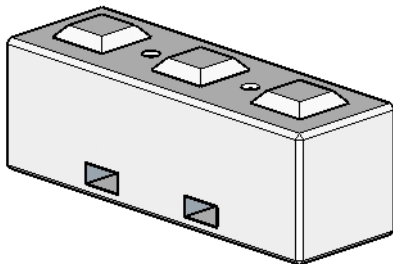
CB.0600.0600.1800.FL145



**Additional Features:**

- 2 of 145x45mm forklift pocket

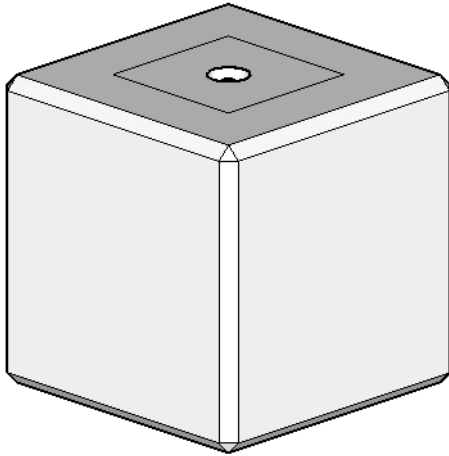
CB.0600.0600.1800.FL190



**Additional Features:**

- 2 of 190x90mm forklift pocket

## 600H X 600W X 600L (500kg)



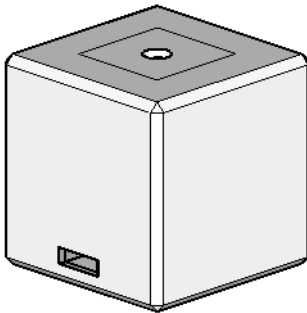
CB.0600.0600.0600.FT

**Core Features:**

- 20MPA Concrete
- 1 of 2.5T engineered lifting point embedded within the top surface
- The interlocking nodule on the top surface has been removed to achieve a flat top finish
- 85% locally sourced raw materials
- Final product is 100% recyclable
- Designed and manufactured in Queensland

---

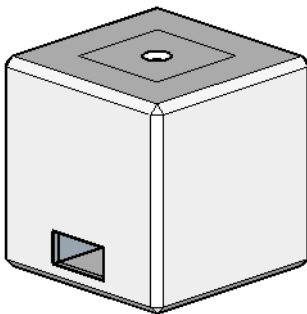
## VARIANTS



CB.0600.0600.0600.FT.FL145

**Additional Features:**

- 1 of 145x45mm forklift pocket



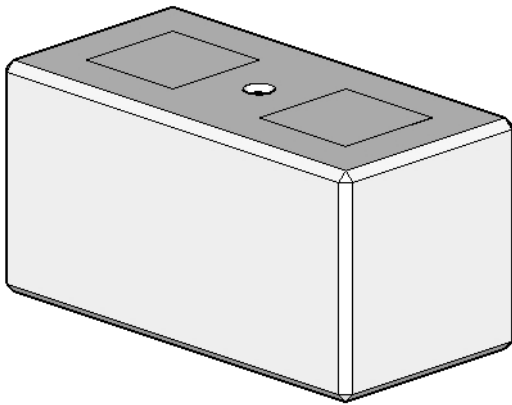
CB.0600.0600.0600.FT.FL190

**Additional Features:**

- 1 of 190x90mm forklift pocket



## 600H X 600W X 1200L (1000kg)



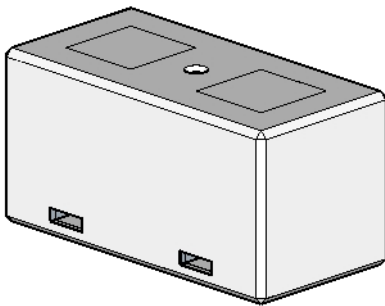
CB.0600.0600.1200.FT

**Core Features:**

- 20MPA Concrete
- 85% locally sourced raw materials
- 2 of 2.5T engineered lifting point
- Inter locking nodules have been removed to achieve a flat top finish
- Final product is 100% recyclable
- Designed and manufactured in Queensland

---

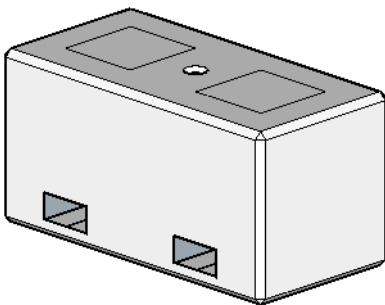
## VARIANTS



CB.0600.0600.1200.FT.FL145

**Additional Features:**

- 2 of 145x45mm forklift pocket



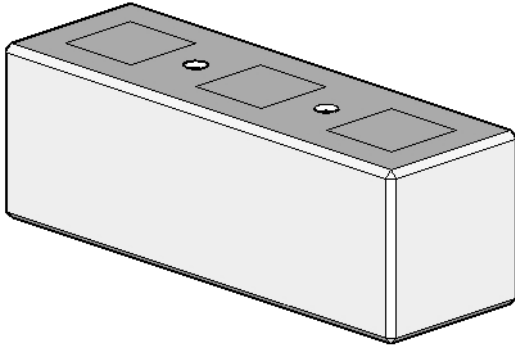
CB.0600.0600.1200.FT.FL190

**Additional Features:**

- 2 of 190x90mm forklift pocket

## 600H X 600W X 1800L (1500kg)

CB.0600.0600.1800.FT



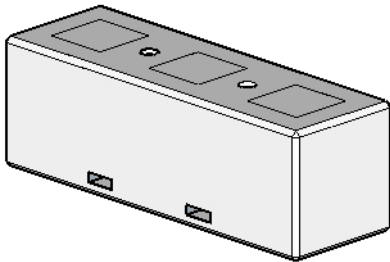
**Core Features:**

- 20MPA Concrete
- 85% locally sourced raw materials
- 2 of 2.5T engineered lifting point
- Interlocking nodules have been removed to achieve a flat top finish
- Final product is 100% recyclable
- Designed and manufactured in Queensland

---

## VARIANTS

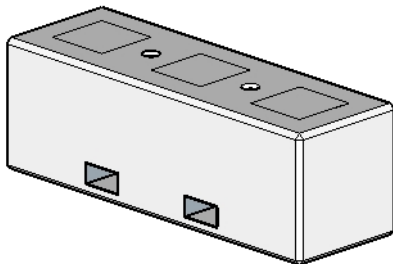
CB.0600.0600.1800.FT.FL145



**Additional Features:**

- 2 of 145x45mm forklift pocket

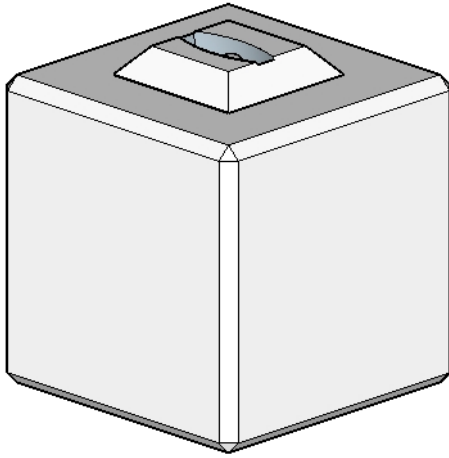
CB.0600.0600.1800.FT.FL190



**Additional Features:**

- 2 of 190x90mm forklift pocket

## 600H X 600W X 600L (500kg)



CB.0600.0600.0600.TDP

**Core Features:**

- 20MPA Concrete
- 85% locally sourced raw materials
- 1 of utility anchor / tie down point
- Final product is 100% recyclable
- Designed and manufactured in Queensland

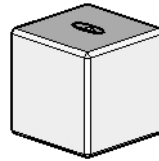
## VARIANTS



CB.0600.0600.0600.TDP.FL145

**Additional Features:**

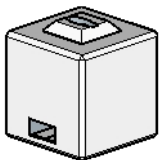
- 1 of 145x45mm forklift pocket



CB.0600.0600.0600.FT.TDP.FL145

**Additional Features:**

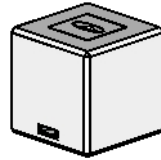
- 1 of 145x45mm forklift pocket
- Flat top design



CB.0600.0600.0600.TDP.FL190

**Additional Features:**

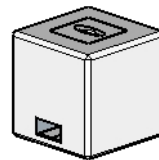
- 1 of 190x90mm forklift pocket



CB.0600.0600.0600.FT.TDP.FL145

**Additional Features:**

- 1 of 190x90mm forklift pocket
- Flat top design



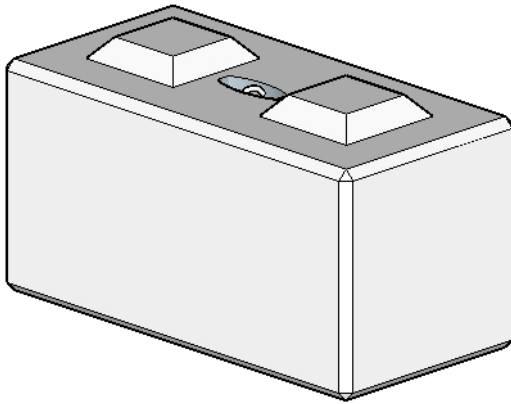
CB.0600.0600.0600.TDP.FL190

**Additional Features:**

- 1 of 145x45mm forklift pocket
- Flat top design

## 600H X 600W X 1200L (1000kg)

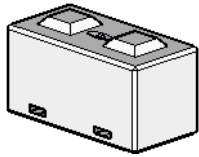
CB.0600.0600.1200.TDP



**Core Features:**

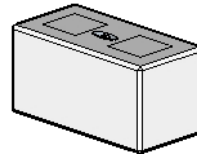
- 20MPA Concrete
- 85% locally sourced raw materials
- 2 of utility anchor / tie down point
- Final product is 100% recyclable
- Designed and manufactured in Queensland

## VARIANTS



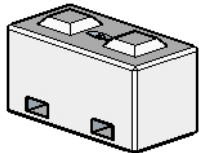
CB.0600.0600.1200.TDP.FL145

**Additional Features:**  
- 1 of 145x45mm forklift pocket



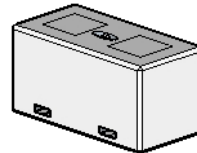
CB.0600.0600.1200.FT.TDP

**Additional Features:**  
- Flat top design



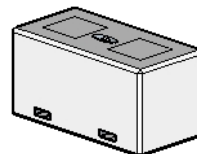
CB.0600.0600.1200.TDP.FL145

**Additional Features:**  
- 1 of 145x45mm forklift pocket



CB.0600.0600.1200.FT.TDP.FL145

**Additional Features:**  
- Flat top design  
- 2 of 145x45mm forklift pockets



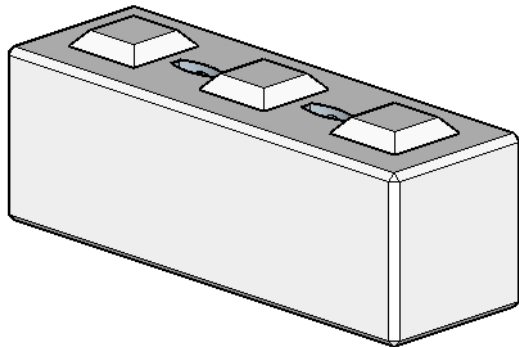
CB.0600.0600.1200.FT.TDP.FL190

**Additional Features:**  
- Flat top design  
- 2 of 190x90mm forklift pockets



## 600H X 600W X 1800L (1500kg)

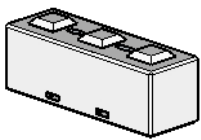
CB.0600.0600.1800.TDP



**Core Features:**

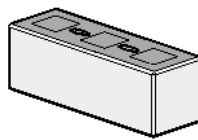
- 20MPA Concrete
- 85% locally sourced raw materials
- 2 of utility anchor / tie down point
- Final product is 100% recyclable
- Designed and manufactured in Queensland

## VARIANTS



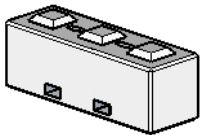
CB.0600.0600.1800.TDP.FL145

**Additional Features:**  
- 1 of 145x45mm forklift pocket



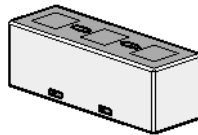
CB.0600.0600.1800.FT.TDP

**Additional Features:**  
- 1 of 145x45mm forklift pocket  
- Flat top design



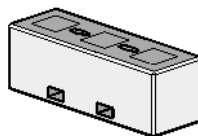
CB.0600.0600.1800.TDP.FL190

**Additional Features:**  
- 1 of 190x90mm forklift pocket



CB.0600.0600.1800.FT.TDP.FL145

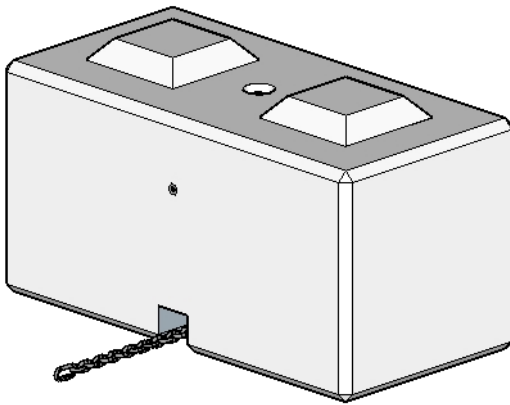
**Additional Features:**  
- 1 of 145x45mm forklift pocket  
- Flat top design



CB.0600.0600.1800.FT.TDP.FL190

**Additional Features:**  
- 1 of 145x45mm forklift pocket  
- Flat top design

## 600H X 600W X 1200L (1000kg)



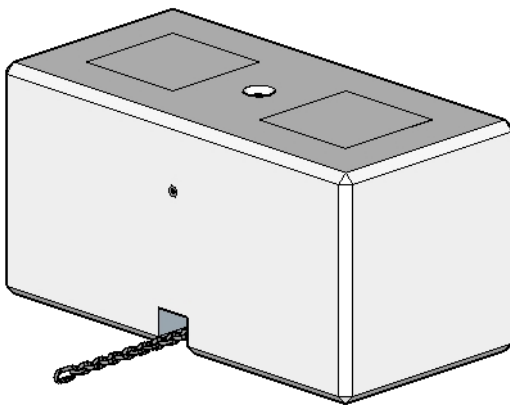
CB.0600.0600.1200.HV.M16F

**Core Features:**

- 20MPA Concrete
- 85% locally sourced raw materials
- 1 of 2.5T lifting point
- 1 of cast-in M16 female threaded ferrule with cross bar
- 100x100mm void on bottom surface designed to allow the block to sit over the top of a chain comfortably
- Final product is 100% recyclable
- Designed and manufactured in Queensland

---

## 600H X 600W X 1200L (1000kg)

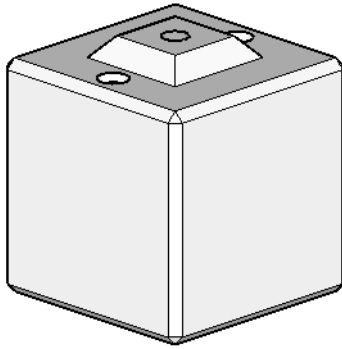


CB.0600.0600.1200.HV.M16F

**Core Features:**

- 20MPA Concrete
- 85% locally sourced raw materials
- 1 of 2.5T lifting point
- 1 of cast-in M16 female threaded ferrule with cross bar
- 100x100mm void on bottom surface designed to allow the block to sit over the top of a chain comfortably
- Flat top design
- Final product is 100% recyclable
- Designed and manufactured in Queensland

## 600H X 600W X 600L (500kg)



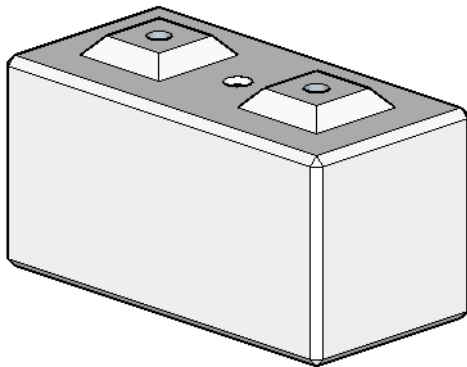
CB.0600.0600.0600.GT

Core Features:

- 20MPA Concrete
- 85% locally sourced raw materials
- 1 of 2.5T lifting point
- 1 of 70mm grout tube
- Final product is 100% recyclable
- Designed and manufactured in Queensland

---

## 600H X 600W X 1200L (1000kg)



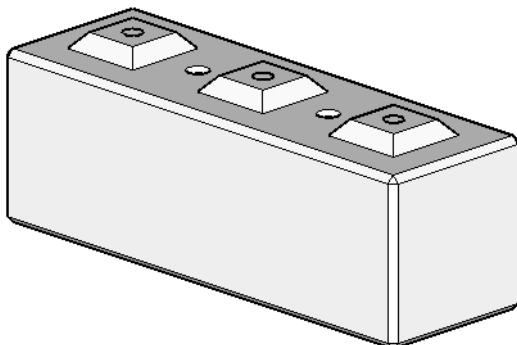
CB.0600.0600.1200.GT

Core Features:

- 20MPA Concrete
- 85% locally sourced raw materials
- 1 of 2.5T lifting point
- 2 of 70mm grout tube
- Final product is 100% recyclable
- Designed and manufactured in Queensland

---

## 600H X 600W X 1800L (1500kg)

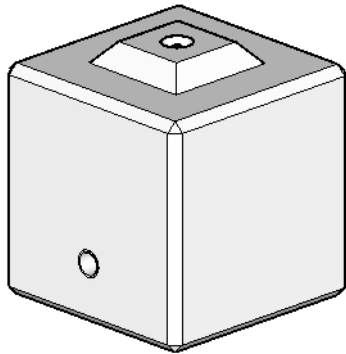


CB.0600.0600.1800.GT

Core Features:

- 20MPA Concrete
- 85% locally sourced raw materials
- 2 of 2.5T lifting point
- 3 of 70mm grout tube
- Final product is 100% recyclable
- Designed and manufactured in Queensland

## 600H X 600W X 600L (500kg)



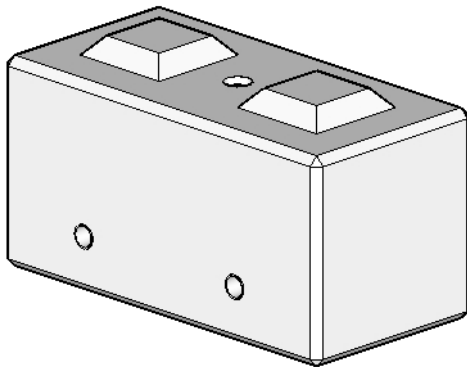
CB.0600.0600.0600.DC

Core Features:

- 20MPA Concrete
- 85% locally sourced raw materials
- 1 of 2.5T lifting point
- 1 of horizontal drainage conduit
- Final product is 100% recyclable
- Designed and manufactured in Queensland

---

## 600H X 600W X 1200L (1000kg)



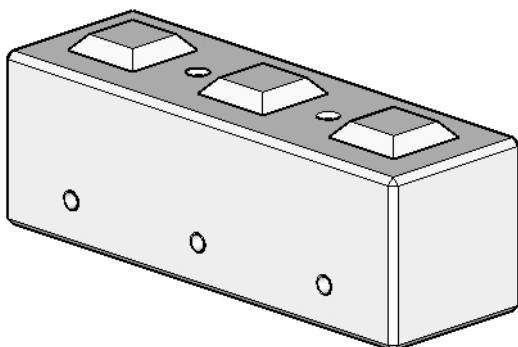
CB.0600.0600.1200.DC

Core Features:

- 20MPA Concrete
- 85% locally sourced raw materials
- 1 of 2.5T lifting point
- 2 of horizontal drainage conduit
- 2 of 70mm grout tube
- Final product is 100% recyclable
- Designed and manufactured in Queensland

---

## 600H X 600W X 1800L (1500kg)



CB.0600.0600.1800.DC

Core Features:

- 20MPA Concrete
- 85% locally sourced raw materials
- 2 of 2.5T lifting point
- 3 of horizontal drainage conduit
- Final product is 100% recyclable
- Designed and manufactured in Queensland



## 600H X 600W X 600L (500kg)



CB.0600.0600.0600.ST

**Core Features:**

- 20MPA Concrete
- 85% locally sourced raw materials
- 1 of 2.5T lifting point
- Stencilling (one colour) as per customer specifications
- Final product is 100% recyclable
- Designed and manufactured in Queensland

---

## 600H X 600W X 1200L (1000kg)



CB.0600.0600.1200.ST

**Core Features:**

- 20MPA Concrete
- 85% locally sourced raw materials
- 1 of 2.5T lifting point
- Stencilling (one colour) as per customer specifications
- Final product is 100% recyclable
- Designed and manufactured in Queensland

---

## 600H X 600W X 1800L (1500kg)

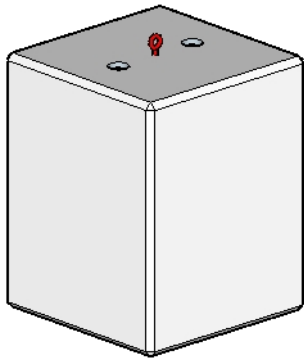


CB.0600.0600.1800.ST

**Core Features:**

- 20MPA Concrete
- 85% locally sourced raw materials
- 2 of 2.5T lifting point
- Stencilling (one colour) as per customer specifications
- Final product is 100% recyclable
- Designed and manufactured in Queensland

## 1000H X 800W X 800L (1600kg)



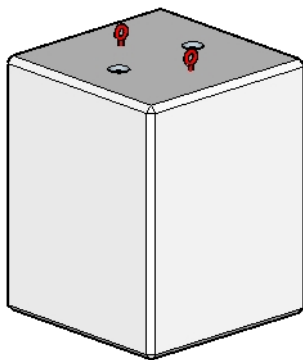
CB.1000.0800.0800.EYEB

**Core Features:**

- 20MPA Concrete
- 85% locally sourced raw materials
- 2 of 2.5T lifting point
- 1 of M16 eyebolt cast into the block
- Designed for guy cable attachment
- Final product is 100% recyclable
- Designed and manufactured in Queensland

---

## 1000H X 800W X 800L (1600kg)



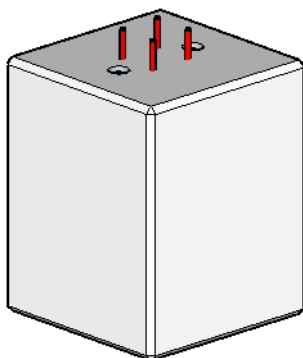
CB.1000.0800.0800.EYEB

**Core Features:**

- 20MPA Concrete
- 85% locally sourced raw materials
- 2 of 2.5T lifting point
- 2 of M16 eyebolt cast into the block
- Designed for guy cable attachment
- Final product is 100% recyclable
- Designed and manufactured in Queensland

---

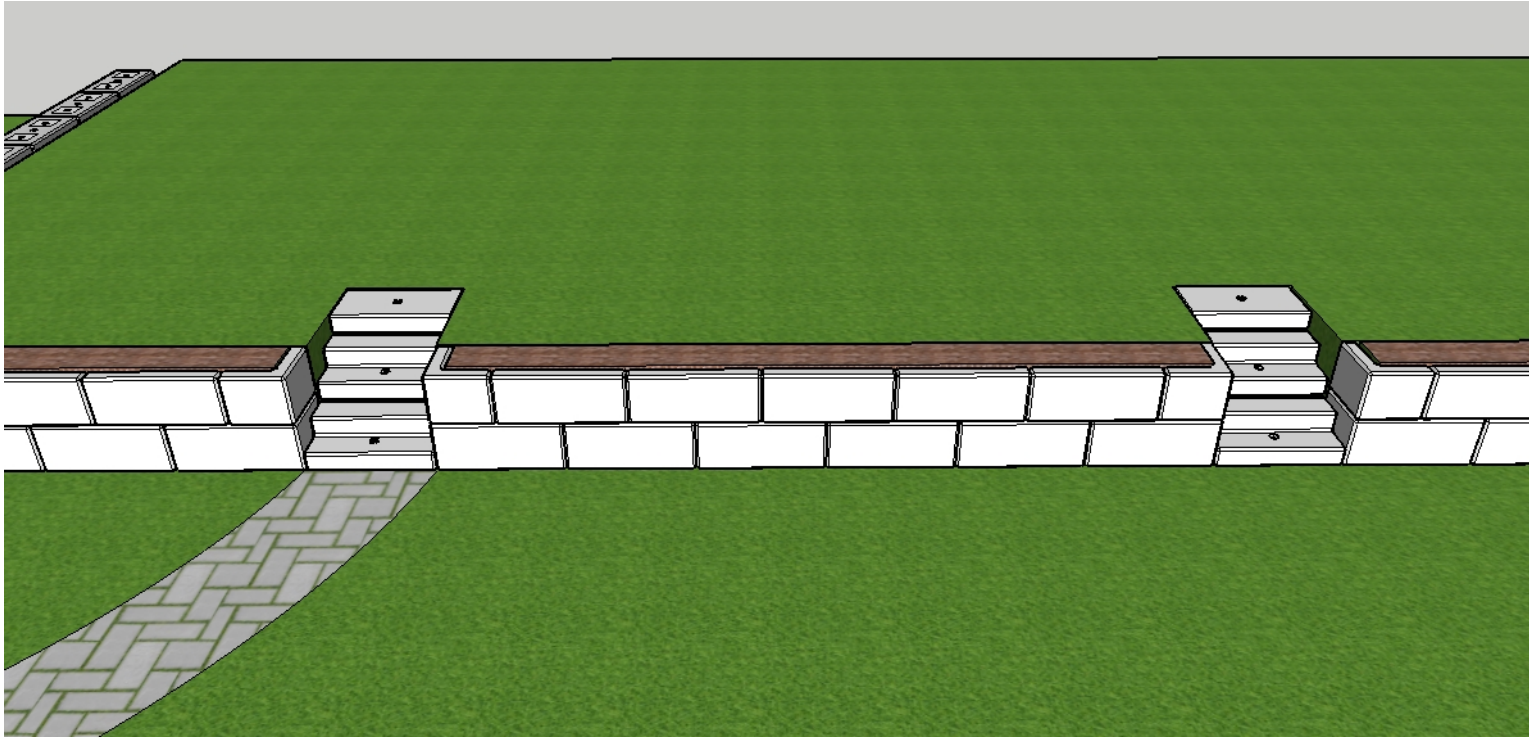
## 1000H X 800W X 800L (1600kg)



CB.1000.0800.0800.HD

**Core Features:**

- 20MPA Concrete
- 85% locally sourced raw materials
- 2 of 2.5T lifting point
- 1 of hold down bolt cage cast into block
- Designed for supporting lighting or comms mast
- Final product is 100% recyclable
- Designed and manufactured in Queensland



Our precast retaining wall system is designed to be modular, easy to place and infinitely scaleable.

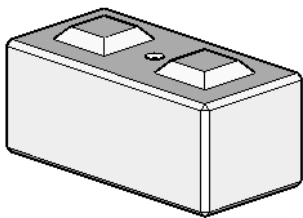
It consists of three parts:

- A base block with interlocking nodules
- A garden kerb block with a kerb on the top surface that allows soil infill right up to the edge and female interlocking nodule recesses on the bottom to allow it to securely lock with the base block
- Modular precast stairs that can rise to either 800mm or 1000mm

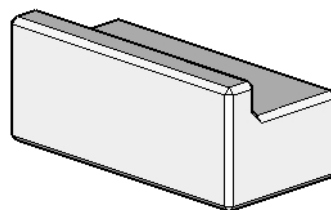
We produce this system in two variants:

- 400 Series (forms a retaining wall which is 800mm tall)
- 500 Series (forms a retaining wall which is 1000mm tall)

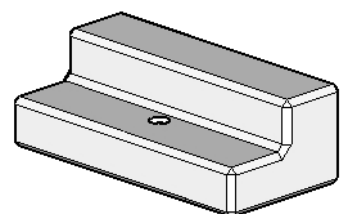
For projects that require additional height we suggest using our interlocking concrete blocks



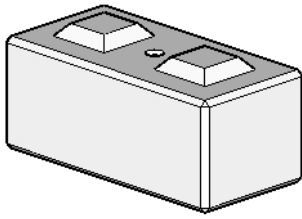
RETAINING WALL  
BASE BLOCK



RETAINING WALL  
GARDEN KERB BLOCK



RETAINING WALL  
STEPS

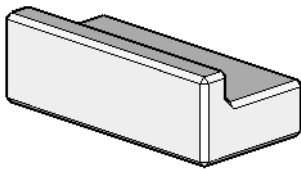


RW.0400.0600.1200.BASE

400h x 600w x 1200l

Core Features:

- 20MPA Concrete
- 85% locally sourced raw materials
- 1 of 2.5T engineered lifting point
- Final product is 100% recyclable
- Designed and manufactured in Queensland

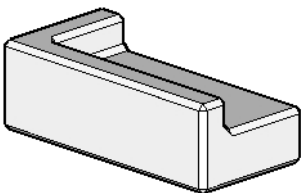


RW.0400.0600.1200.GK

400h x 600w x 1200l (Kerb measures 150x150x1200mm)

Core Features:

- 20MPA Concrete
- 85% locally sourced raw materials
- 1 of 2.5T engineered lifting point
- Final product is 100% recyclable
- Designed and manufactured in Queensland



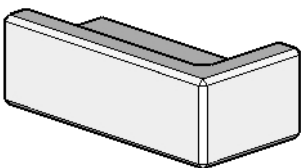
RW.0400.0600.1200.GKLHS & GKRHS

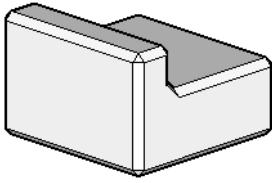
400h x 600w x 1200l (Kerb measures 150x150x1200mm)

These blocks form the corners of a wall

Core Features:

- 20MPA Concrete
- 85% locally sourced raw materials
- 1 of 2.5T engineered lifting point
- Final product is 100% recyclable
- Designed and manufactured in Queensland



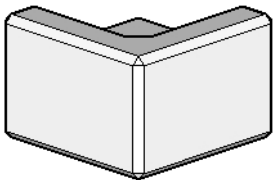


RW.0400.0600.0600.GK

400h x 600w x 600l

Core Features:

- 20MPA Concrete
- 85% locally sourced raw materials
- 1 of 2.5T engineered lifting point
- Final product is 100% recyclable
- Designed and manufactured in Queensland



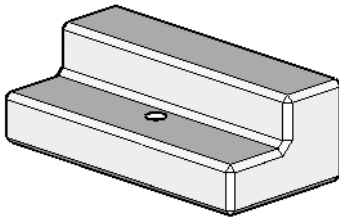
RW.0400.0600.0600.GKCORNER

400h x 600w x 600l

Core Features:

- 20MPA Concrete
- 85% locally sourced raw materials
- 1 of 2.5T engineered lifting point
- Final product is 100% recyclable
- Designed and manufactured in Queensland



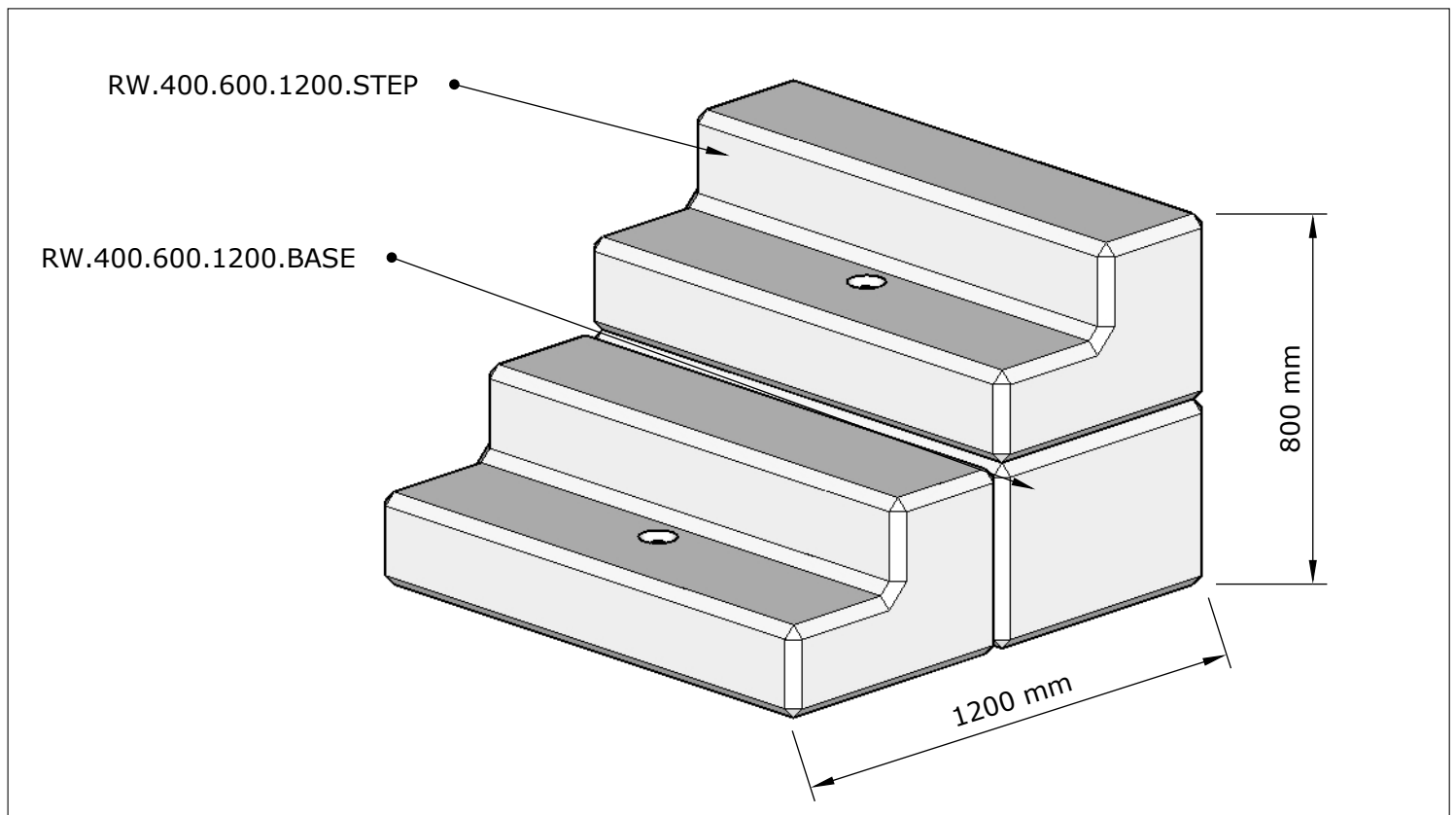


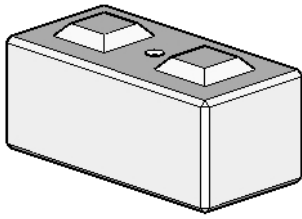
RW.0400.0600.1200.STEP

400h x 600w x 1200l

Core Features:

- 20MPA Concrete
- 85% locally sourced raw materials
- 1 of 2.5T engineered lifting point
- Final product is 100% recyclable
- Designed and manufactured in Queensland



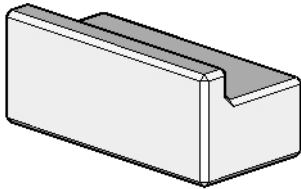


RW.0500.0600.1200.BASE

500h x 600w x 1200l

**Core Features:**

- 20MPA Concrete
- 85% locally sourced raw materials
- 1 of 2.5T engineered lifting point
- Final product is 100% recyclable
- Designed and manufactured in Queensland

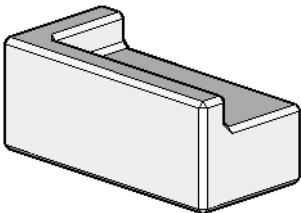


RW.0500.0600.1200.GK

500h x 600w x 1200l (Kerb measures 150x150x1200mm)

**Core Features:**

- 20MPA Concrete
- 85% locally sourced raw materials
- 1 of 2.5T engineered lifting point
- Final product is 100% recyclable
- Designed and manufactured in Queensland



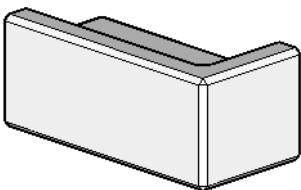
RW.0500.0600.1200.GKLHS & GKRHS

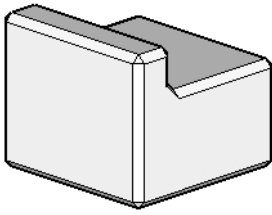
500h x 600w x 1200l (Kerb measures 150x150x1200mm)

These blocks form the corners of a wall

**Core Features:**

- 20MPA Concrete
- 85% locally sourced raw materials
- 1 of 2.5T engineered lifting point
- Final product is 100% recyclable
- Designed and manufactured in Queensland



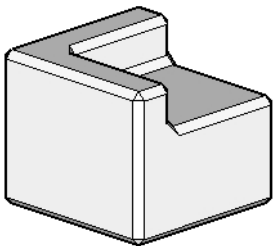


RW.0500.0600.0600.GK

400h x 600w x 600l

Core Features:

- 20MPA Concrete
- 85% locally sourced raw materials
- 1 of 2.5T engineered lifting point
- Final product is 100% recyclable
- Designed and manufactured in Queensland



RW.0500.0600.0600.GKCORNER

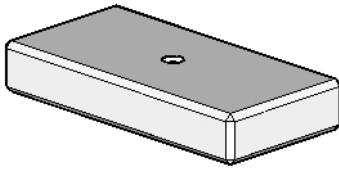
400h x 600w x 600l

Core Features:

- 20MPA Concrete
- 85% locally sourced raw materials
- 1 of 2.5T engineered lifting point
- Final product is 100% recyclable
- Designed and manufactured in Queensland

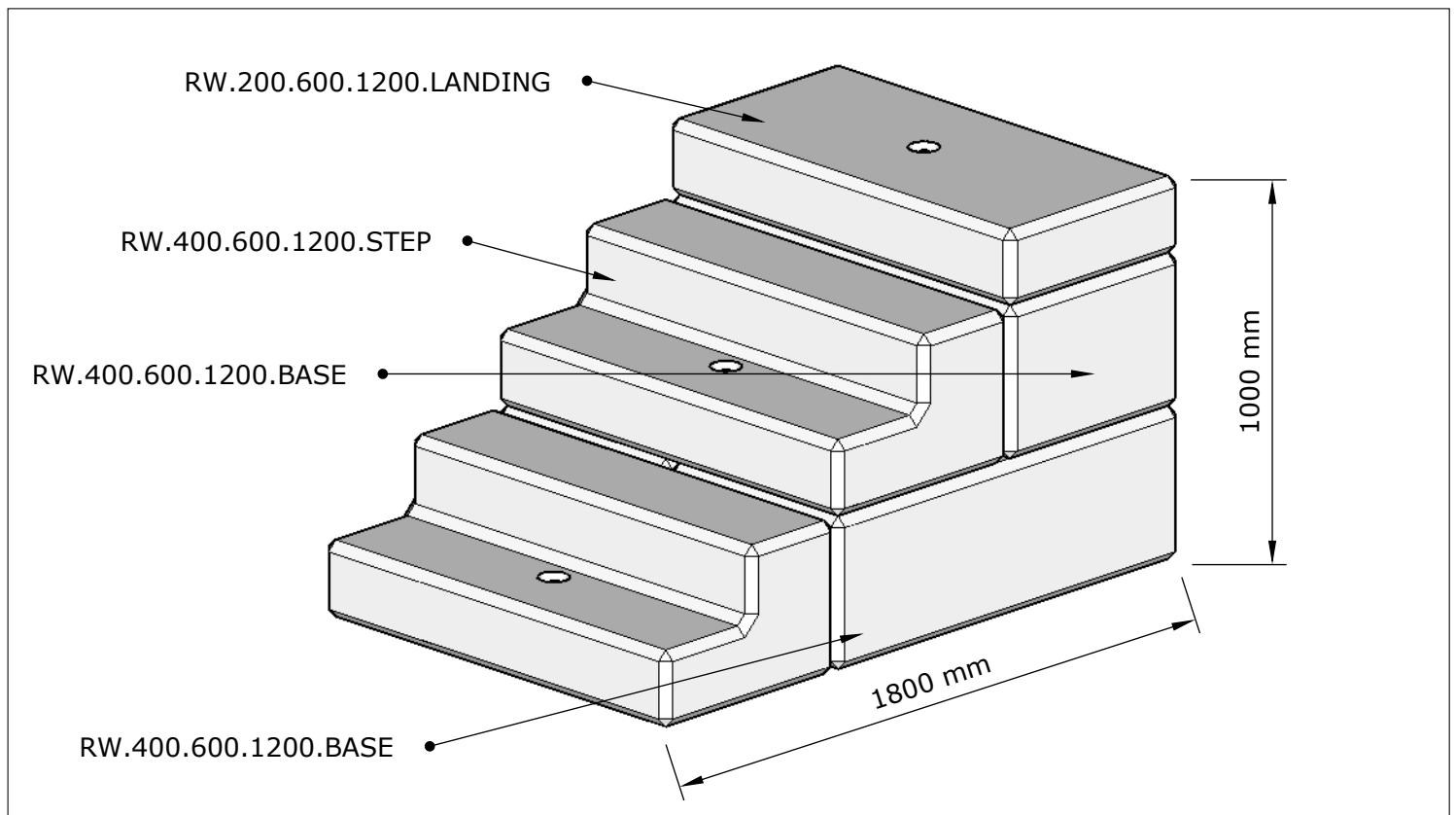
RW.0200.0600.1200.LANDING

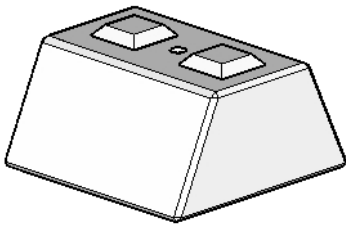
200h x 600w x 1200l



Core Features:

- 20MPA Concrete
- 85% locally sourced raw materials
- 1 of 2.5T engineered lifting point
- Final product is 100% recyclable
- Designed and manufactured in Queensland





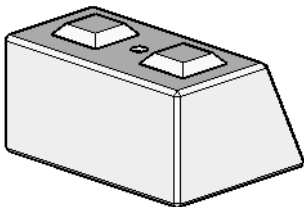
CB.0600.1200.1200.WB

600h x 1200w x 1200l

Designed with a sloped base for use in materials storage and aggregate bunker construction

Core Features:

- 20MPA Concrete
- 85% locally sourced raw materials
- 1 of 2.5T engineered lifting point
- Final product is 100% recyclable
- Designed and manufactured in Queensland



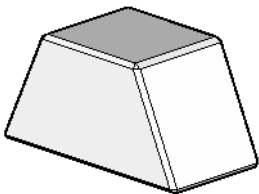
CB.0600.0900.1200.WB

600h x 900w x 1200l

Designed with a sloped base for use in materials storage and aggregate bunker construction

Core Features:

- 20MPA Concrete
- 85% locally sourced raw materials
- 1 of 2.5T engineered lifting point
- Final product is 100% recyclable
- Designed and manufactured in Queensland



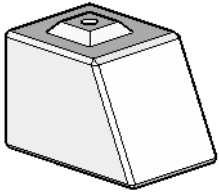
CB.0600.0600.1200.WB

600h x 600w x 1200l

Designed with a sloped base for use in materials storage and aggregate bunker construction

Core Features:

- 20MPA Concrete
- 85% locally sourced raw materials
- 1 of 2.5T engineered lifting point
- Final product is 100% recyclable
- Designed and manufactured in Queensland



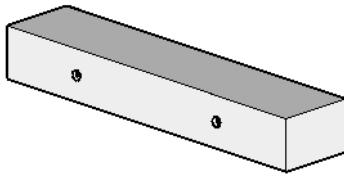
CB.0600.0600.0900.WB

600h x 600w x 900l

Designed with a sloped base for use in materials storage and aggregate bunker construction

Core Features:

- 20MPA Concrete
- 85% locally sourced raw materials
- 1 of 2.5T engineered lifting point
- Final product is 100% recyclable
- Designed and manufactured in Queensland

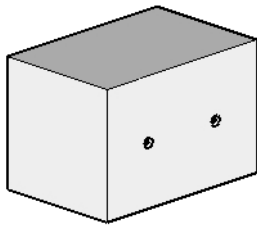


CB.0400.0600.2800.LOGBLOCK

400h x 600w x 2800l

Core Features:

- 20MPA Concrete
- 85% locally sourced raw materials
- 1 of 2.5T engineered lifting point
- Final product is 100% recyclable
- Designed and manufactured in Queensland

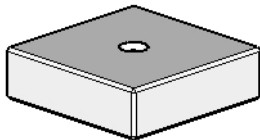


CB.1000.1000.1500.FOOTING

1000h x 1000w x 1500l

Core Features:

- 20MPA Concrete
- 85% locally sourced raw materials
- 1 of 2.5T engineered lifting point
- Final product is 100% recyclable
- Designed and manufactured in Queensland

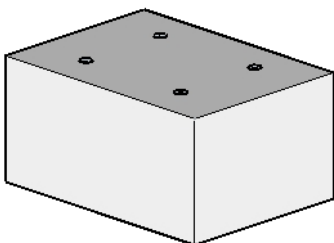


CB.0150.0500.0500

150h x 500w x 500h

Core Features:

- 20MPA Concrete
- 85% locally sourced raw materials
- 1 of 2.5T engineered lifting point
- Final product is 100% recyclable
- Designed and manufactured in Queensland



CB.1500.2200.3000

1500w x 2200w x 3000l (23000kg)

Designed for mooring ships and boats

Core Features:

- 20MPA Concrete
- 85% locally sourced raw materials
- 1 of 2.5T engineered lifting point
- Final product is 100% recyclable
- Designed and manufactured in Queensland